

Code: 90212  
 Collection: HULA HOOP  
 Version: 00 Date:  
 Brand: Decòrative / /



Istruzioni per l'installazione  
 Installation instructions  
 Instrucciones para la instalaciòn  
 Instructions pour l'installation  
 Installationsanleitung

ATTENZIONE: la sicurezza dell'apparecchio è garantita solo con l'uso appropriato delle seguenti istruzioni; pertanto è necessario conservarle.

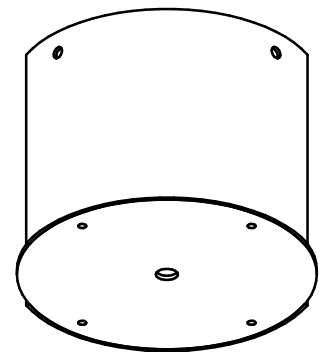
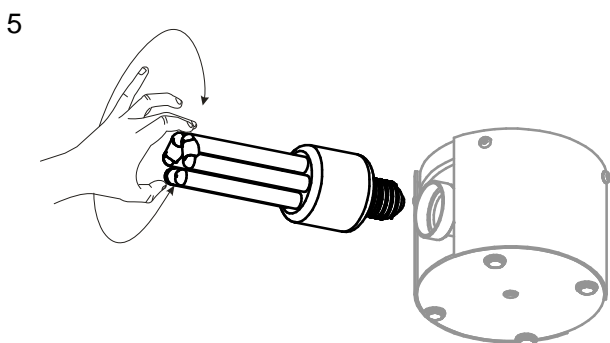
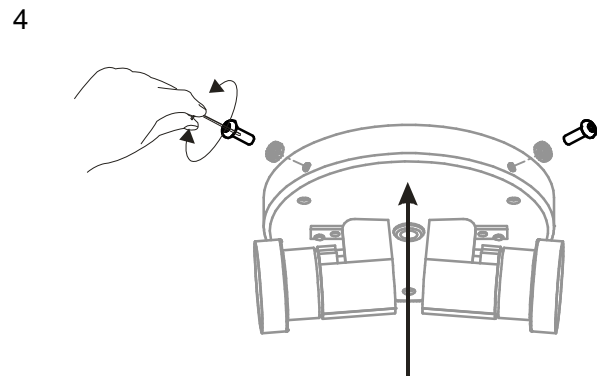
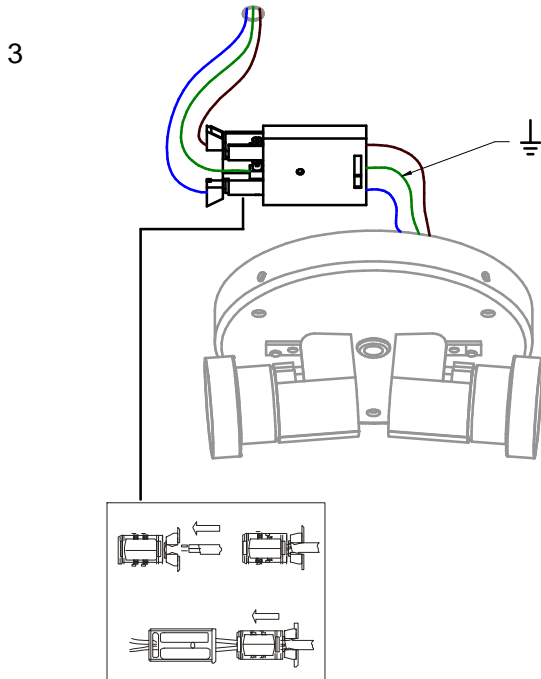
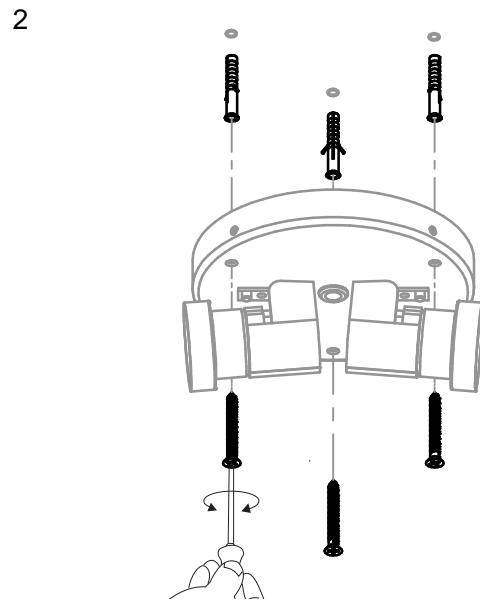
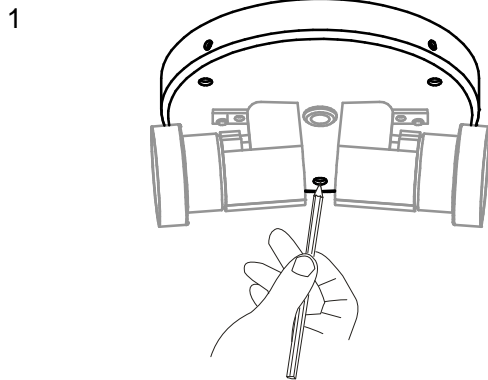
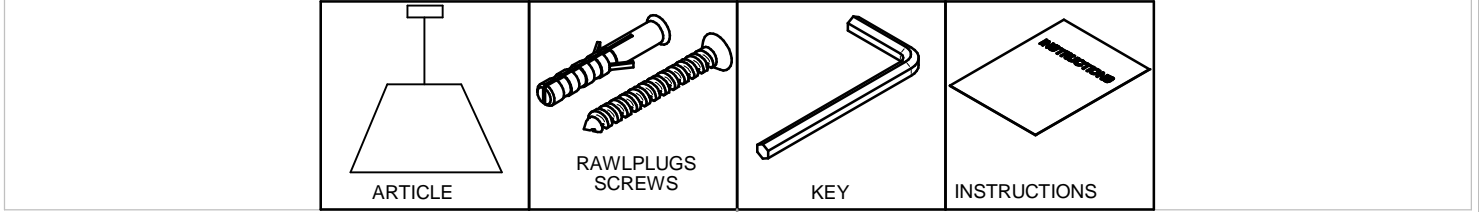
WARNING: the safety of this fixture is guaranteed only if you comply with these instructions; remember to conserve in a safe place.

ATENCIÓN: la seguridad del aparato se garantiza solo cumpliendo cuidadosamente las siguientes instrucciones; por ello, es necesario conservarlas.

ATTENTION: la securite de l'appareil n'est garantie qu'en cas d'utilisation correcte des instructions suivantes; il faut par consequent les conserver.

ACHTUNG: die sicherheit des gerates wird nur durch sachgemasse befolgung nachstehender anweisungen gewahrleistet; ihre aufbewahrung ist deshalb sehr wichtig.

Contenuto dell'imballo - Box Contents - Contenido de la confección - Contenu de l'emballage - Packungsinhalt

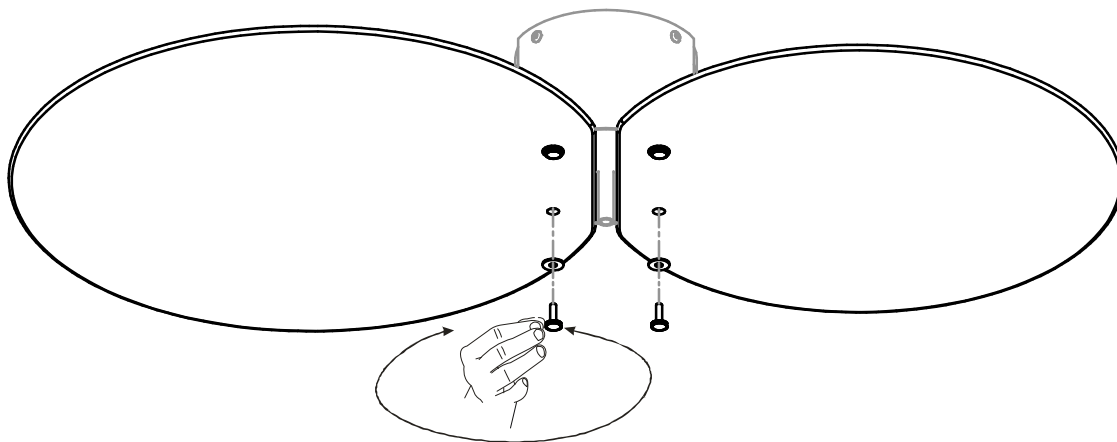


Code: 90212  
Collection: HULA HOOP  
Version: 00 Date:  
Brand: Decòrative / /

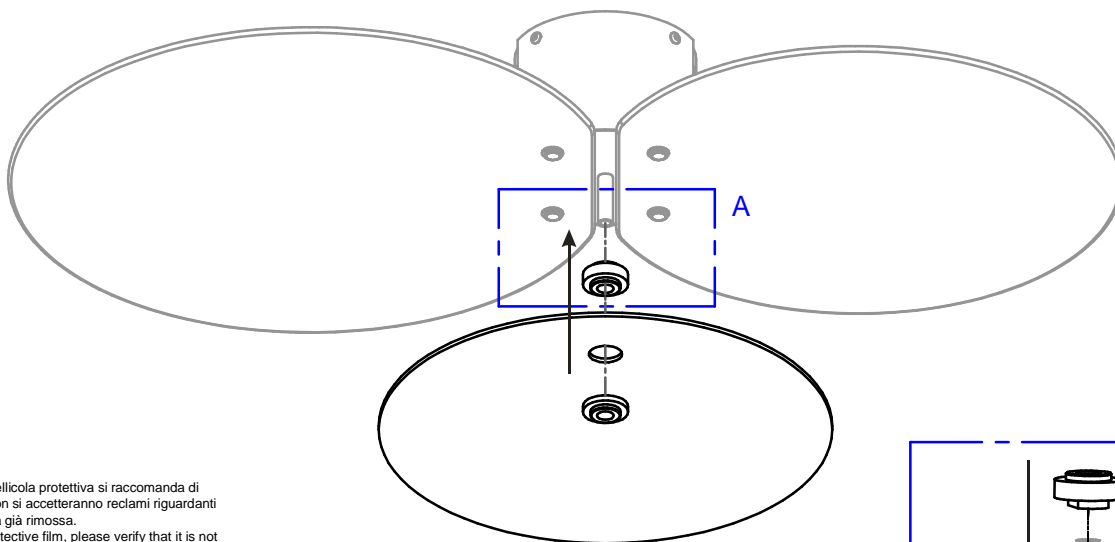
 **linea**  
light  
group

Istruzioni per l'installazione  
Installation instructions  
Instrucciones para la instalaciòn  
Instructions pour l'installation  
Installationsanleitung

6



7



**ATTENZIONE:**

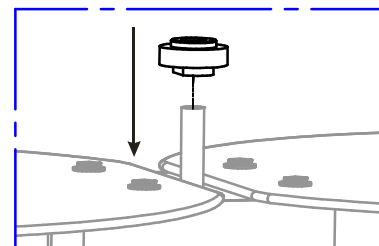
-Prima di rimuovere la pellicola protettiva si raccomanda di controllarne l'integrità: non si accetteranno reclami riguardanti graffi se inviati a pellicola già rimossa.

-Before taking off the protective film, please verify that it is not damaged. We cannot accept claims about scratches when the film has already been taken off.

-Sie die Schutzfolie entfernen ist die Vollständigkeit zu kontrollieren; es werden keine Reklamationen nach Entfernen der Schutzfolie mehr akzeptiert.

-Nour vous prions de vérifier l'intégrité de la pellicule de protection avant de l'enlever. Nous ne pouvons pas accepter réclamations concernant rayures si les pièces sont renvoyés sans pellicule.

-Antes de quitar la película de protección comprobar el estado de la misma: no se aceptaran reclamaciones de piezas rayadas si reclamadas despues la eliminacion de la película.



DETTAGLIO A

8

