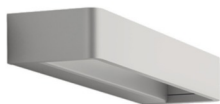




Wall Lights | 220-240 V | topLED 11 W 500 mA | CRI 90
90321



Technical data	
Type	Surface
Installation position	Wall lights
Installation environment	Indoor
Light Source	LED
Optics	General Lighting
Light emission direction	downward
Power	11 W
Source lumens	1211 lm
Frequency	60 - 50 Hz
CCT / Tone	3000 K
Colour rendering index	90 Ra
Safety class	1
IP	IP40
Glow wire test	650°
Direct mounting on normally flammable surfaces	Yes
CE	Yes
ETL	No
Fire Rated (BS 476 PT21 compliant)	No
Driver included	Driver
Induction	No
Emergency mode	No
Motion sensor	No
Directional	No
Tilting	No
Walk-over	No
Drive-over	No
Cable included	No
Resin potting	No
Type of light emission	Double emission



Wall Lights | 220-240 V | topLED 11 W 500 mA | CRI 90
90321

Double emission wall lights for indoor application. The warm white LED light source with a general lighting light distribution is composed of 24 topLEDs with CCT of 3000 K and a CRI 90; the source luminous flux is 1211 lm, with a 110.1 lm/W nominal luminous efficacy.

The mounting frame is made of aluminium, with a translucent finish. The ingress protection degree is IP40;

The total absorbed power is 11 W.

The device features protection class I and can be wall lights-mounted.

Illuminotechnical Features	
Source lumens	1211 lm
Colour temperature	3000 K
Standard Deviation of Colour Matching	3 Step MacAdam
Colour rendering index	90 Ra
LED Life / Failure Ratio	
L80 B20 C0 80000h	