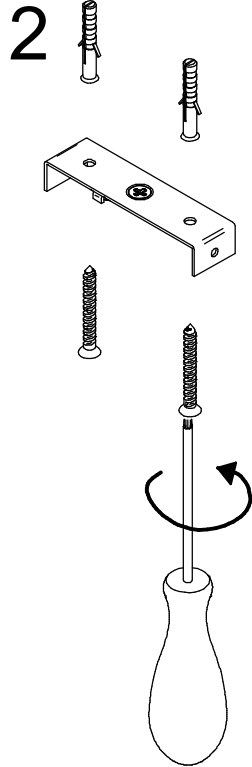
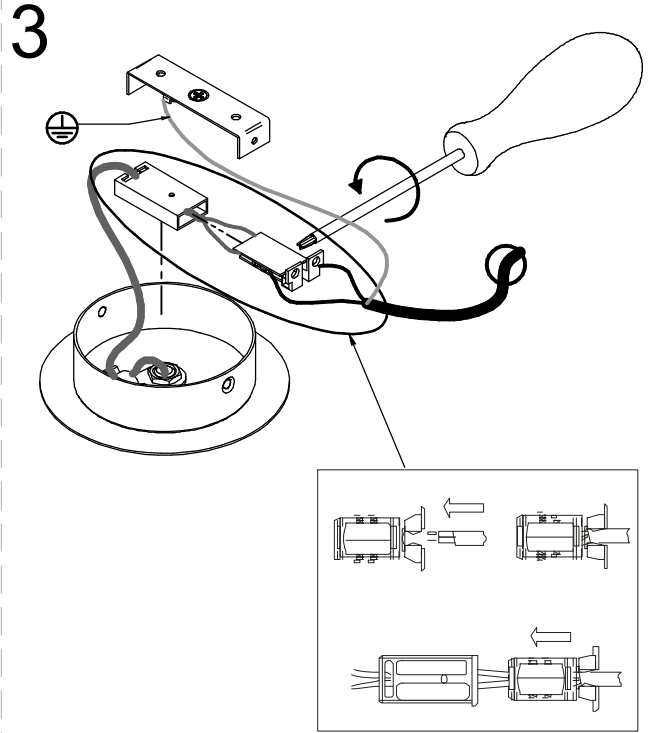


Montaggio del vetro
Fix the glass
Montage du verre
Glaseinbau
Montaje cristal

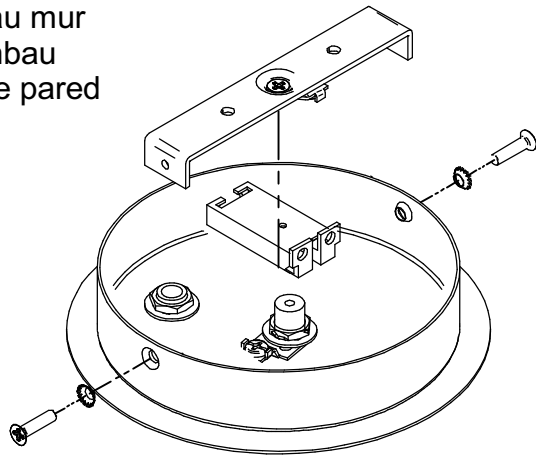


Fissare la staffa sul soffitto
Have the backplate fixed on the ceiling
Fixer l'etrier sur le plafond
Den stegbuegel an die decke befestigen
Fijar el estribo al techo



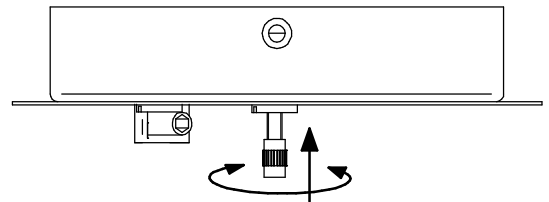
Cablaggio articolo
Wiring
Electrification
Verkabelung
Cablaje articulo

Montaggio a muro
Fix on a wall
Montage au mur
Deckeneinbau
Montaje de pared

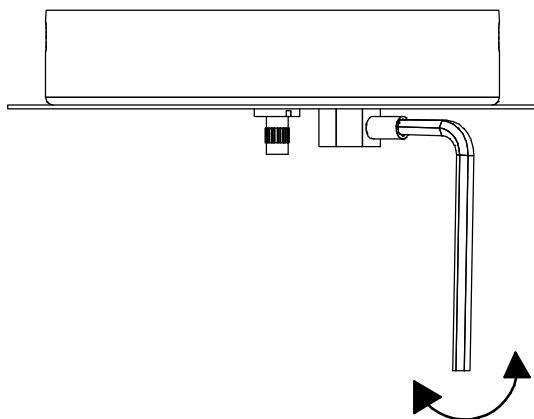


4

5



Per regolare il cavo d'acciaio svitare la bocchetta e premere sul perno
To adjust the stainless steel cord unscrew the metal part while pressing the pin
Pour regler le cable d'acier devisser lembout et appuyer sur le pivot
Laenge der haltseile einstellen huelse herausdrehenlaenge einstellen und wieder befestigen
Para regular el cable de acero desatornillar el casquillo y apretar el perno



Svitare il grano e regolare la lunghezza dei cavi
Release the side screw to have the wire adjusted
Devisser l'ecrou et regler la longueur des cables
Laenge der stromkabel am baldachin mit mitgeliefertem schluessel einstellen
Desatornillar la tuerca y regular el largo de los cables

6