

## PRODUCT DATASHEET PT-FIT 70/220...240 S

POWERTRONIC PT-FIT S | ECG for HID lamps, for installation in luminaires



### AREAS OF APPLICATION

- Shop lighting
- Health and fitness areas (in luminaires with protection class IP66 or higher)
- Effect and accent lighting

### PRODUCT BENEFITS

- Optimized cost/benefit factor
- Compact dimensions and low weight for small luminaire designs
- Automatic safety shutdown of lamps in the event of a defect or at end of life (EoL)

### PRODUCT FEATURES

- Energy Efficiency Index EEI: A2
- Supply voltage: 220...240 V
- Line frequency: 50...60 Hz
- RI suppression: to EN 55015/CISPR 15
- Safety: to EN 61347-2-12
- Line harmonics according to EN 61000-3-2
- Immunity according to EN 61547

**TECHNICAL DATA**

Electrical data

Lamp wattage	73 W
Line current	0.36 A <sup>1)</sup>
Ignition voltage	4.5 kVp
Operating frequency	0.200...0.240 kHz
System wattage [AGGR]	80.00 W
ECG efficiency	92 %
Input voltage AC	198...264 V
Nominal voltage	220...240 V
Mains frequency	50...60 Hz
Power factor λ	0.95 <sup>2)</sup>
Inrush current	45 A <sup>3)</sup>
Max. ECG no. on circuit breaker 10 A (B)	7 <sup>4)</sup>
Max. ECG no. on circuit breaker 16 A (B)	13 <sup>4)</sup>
Max. no. of ECGs on 16A MCB with EBN-OS	32 <sup>4)</sup>
Protective conductor current	0.3 mA
U-OUT (working voltage)	250 V
Max. working voltage between LH and LL	250 V
Max. working voltage betw. LL/LH & earth	250 V
Max. capacitance of wire ECG/lamp	120 pF

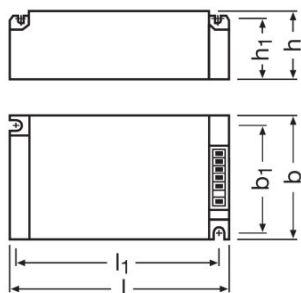
<sup>1)</sup> At 230 V<sub>AC</sub>

<sup>2)</sup> Minimum

<sup>3)</sup>  $t_{width} = 250 \mu s$  (measured at 50 %  $I_{peak}$ )

<sup>4)</sup> Type B

Dimensions & weight



Length	110.0 mm
Width	75.0 mm
Height	30.0 mm

<b>Mounting hole spacing, length</b>	99.0 mm
<b>Mounting hole spacing, width</b>	64.0 mm
<b>Cable cross-section, input side</b>	0.5...1.0 / 0.5...1.5 mm <sup>2</sup> <sup>1)</sup>
<b>Cable cross-section, output side</b>	0.5...1.0 / 0.5...1.5 mm <sup>2</sup> <sup>1)</sup>
<b>Wire preparation length, input side</b>	8.5...9.5 mm
<b>Wire preparation length, output side</b>	8.5...9.5 mm
<b>Product weight</b>	250.00 g

<sup>1)</sup> With ferrule / Without ferrule

### Colors & materials

<b>Casing material</b>	Metal
------------------------	-------

### Temperatures & operating conditions

<b>Ambient temperature range</b>	-15...+55 °C
<b>Maximum temperature at tc test point</b>	85 °C

### Lifespan

<b>ECG lifetime</b>	30000 h <sup>1)</sup>
---------------------	-----------------------

<sup>1)</sup> At maximum T<sub>c</sub> / 10% failure rate

### Additional product data

<b>Design / version</b>	Built-in unit
-------------------------	---------------

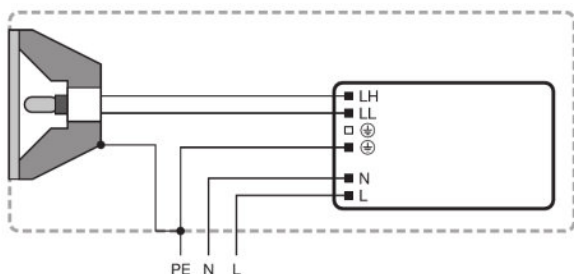
### Capabilities

<b>Max. cable length to lamp/LED module</b>	1.5 m
<b>Overheating protection</b>	Power reduction and switch off at T > 85 °C at the tc point
<b>ECG reset time</b>	> 0.5 s
<b>Dimmable</b>	No
<b>Restriction on ignition time</b>	20 min
<b>Suitable for fixtures with prot. class</b>	I

### Certificates & standards

<b>Approval marks – approval</b>	VDE / VDE-EMC / EAC / C-Tick
<b>Type of protection</b>	IP20
<b>EEL – Energy Label</b>	A2
<b>Standards</b>	Acc. to EN 61347-2-12/Acc. to EN 55015/Acc. to EN 61000-3-2/Acc. to EN 61547

Wiring Diagram



Wiring diagram







**SAFETY ADVICE**

Ballast losses and lamp heat radiation can lead to heat accumulation in a completely closed case. Therefore it is necessary to ensure that the temperature at the measuring point t of the ECG does not exceed the maximum value.

**ATTENTION!**

For safety reasons disconnect the device before replacing the lamp!

**DOWNLOAD DATA**

File	
	Tender documents 339884_Tender Document for POWERTRONIC EVG.eng
	Certificates 554891_EAC PT family
	Certificates 335123_EMC-Marks approval
	Certificates 335124_VDE-Marks approval
	Declarations of conformity EU Declaration of Conformity 3035574
	Installation/Operation notice 334206_Technical guide - POWERTRONIC for HID-lamps (GB)



Operating instructions  
590729\_EAC - PTI S PT-FIT S

**LOGISTICAL DATA**

Product code	Product description	Packaging unit (Pieces/Unit)	Dimensions (length x width x height)	Volume	Gross weight
4008321386649	PT-FIT 70/220...240 S	Shipping carton box 20	412 mm x 136 mm x 152 mm	8.52 dm <sup>3</sup>	5269.89 g

The mentioned product code describes the smallest quantity unit which can be ordered. One shipping unit can contain one or more single products. When placing an order, for the quantity please enter single or multiples of a shipping unit.

**DISCLAIMER**

Subject to change without notice. Errors and omission excepted. Always make sure to use the most recent release.