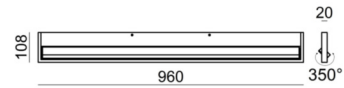


# Tablet\_W1



Wall Lights | 198-264 V | topLED 26 W | CRI 90  
7605



Technical data	
Installation position	Wall lights
Installation environment	Indoor
Light Source	LED
Optics	General Lighting
Light emission direction	upward
Power	26 W
Luminous flux (source)	3118 lm
Frequency	60 - 50 Hz
CCT / Tonalità	3000 K
Colour rendering index	90 Ra
AC / DC	AC
Safety class	1
IP	IP40
Glow wire test	850°
Direct mounting on normally flammable surfaces	Yes
CE	Yes
ETL	No
Driver included	Yes
Induzione	No
Emergency mode	No
Motion sensor	No
Directional	Yes
Tilting	No
Walk-over	No
Drive-over	No
Cable included	No
Resin potting	No

Finishing casing	
Material	Aluminium
Colour	embossed white RAL 9003
Processing	Coating

Finishing diffuser	
Material	PC
Processing	Sandblasting



Wall Lights | 198-264 V | topLED 26 W | CRI 90  
7605

Single emission wall lights for indoor application. The warm white LED light source with a general lighting light distribution is composed of 108 topped LEDs with CCT of 3000 K and a CRI 90; the source luminous flux is 3118 lm, with a 119.9 lm/W nominal luminous efficacy and an operating lifetime (L80) of 80000 hours.

The device body is made of aluminium and features a embossed white ral 9003 finish, processed by means of coating; the diffuser is made of PC with a sandblasting treatment. The ingress protection degree is IP40; the total weight is of 2.900 kg. The power supply driver is included in the delivery.

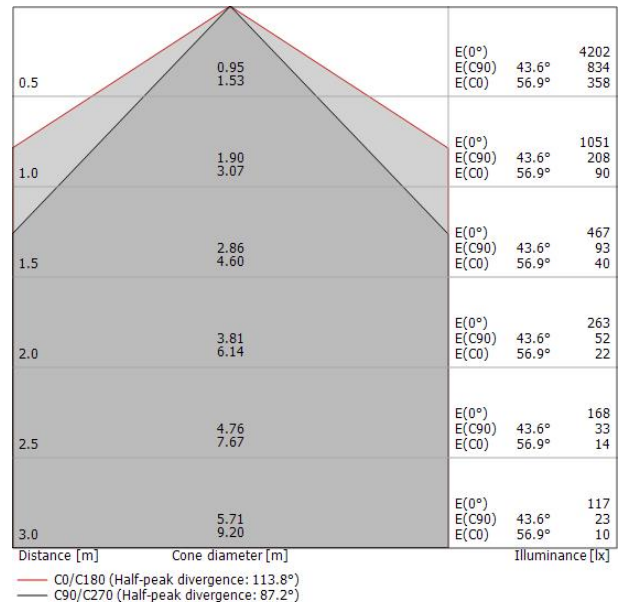
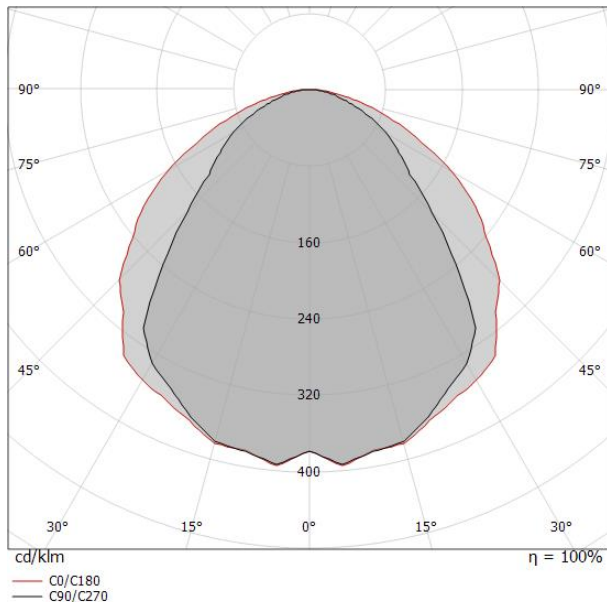
The total absorbed power is 26 W.

The device features protection class I and can be wall lights-mounted.

Illuminotechnical Features	
Light Output Ratio (LOR)	89 %
Luminous flux (source)	3118 lm
Luminaire luminous flux	2780 lm
Consumption	31 W
Luminaire efficacy	89 lm/W
Colour temperature	3000 K
Standard Deviation of Colour Matching	3 Step MacAdam
Colour rendering index	90 Ra
Life / Failure ratio	L80C0B20

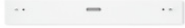
UGR	
X=4H   Y=8H	S=0.25H
Reflection factor	70/50/20
UGR transversal	< 28
UGR axial	< 25

OPTICAL	
Light distribution simmetry	Asymmetrical
Ottica C0/C180	114°
Ottica C90/C270	87°





**7605**



Bracket

L=96mm, H=5mm, D=50mm

**Code**

Kit 84