

Code: 7475
 Collection: FACE
 Version: 00 Date:
 Brand: Decòrative / /



Istruzioni per l'installazione
 Installation instructions
 Instrucciones para la instalaciòn
 Instructions pour l'installation
 Installationsanleitung

ATTENZIONE: la sicurezza dell'apparecchio è garantita solo con l'uso appropriato delle seguenti istruzioni; pertanto è necessario conservarle.

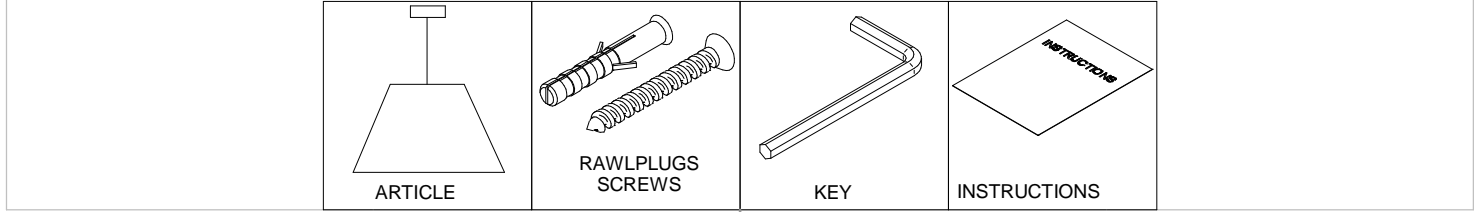
WARNING: the safety of this fixture is guaranteed only if you comply with these instructions; remember to conserve in a safe place.

ATENCIÓN: la seguridad del aparato se garantiza solo cumpliendo cuidadosamente las siguientes instrucciones; por ello, es necesario conservarlas.

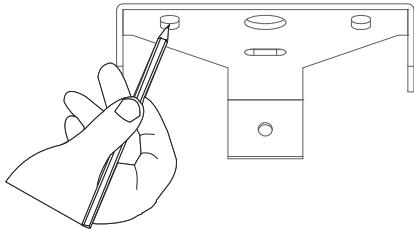
ATTENTION: la securite de l'appareil n'est garantie qu'en cas d'utilisation correcte des instructions suivantes; il faut par consequent les conserver.

ACHTUNG: die sicherheit des gerates wird nur durch sachgemasse befolgung nachstehender anweisungen gewährleistet; ihre aufbewahrung ist deshalb sehr wichtig.

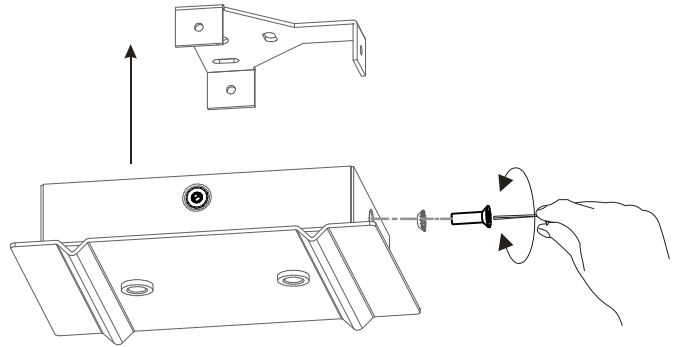
Contenuto dell'imballo - Box Contents - Contenido de la confección - Contenu de l'emballage - Packungsinhalt



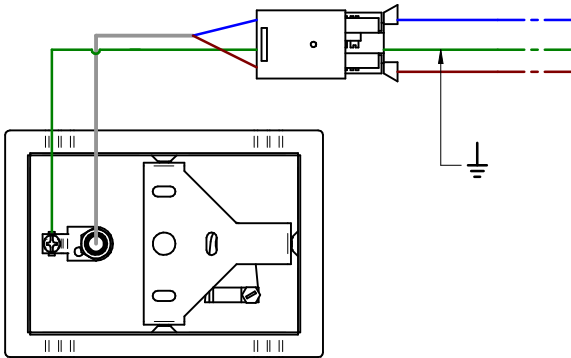
1



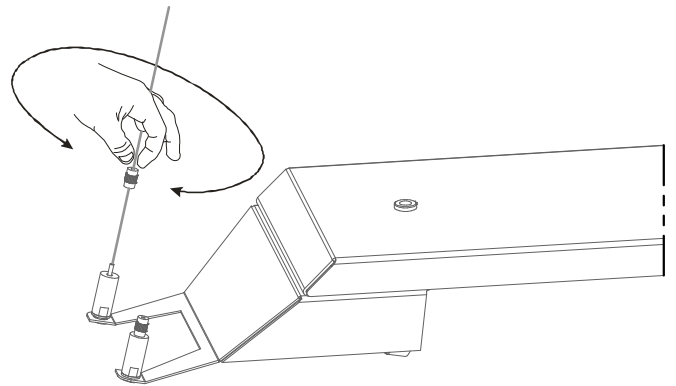
4



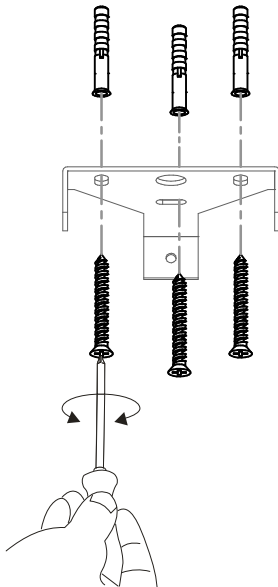
2



5



3



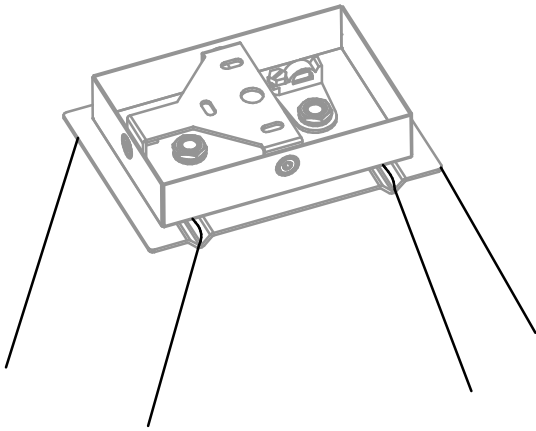
-Inserire il cavo d'acciaio nel particolare e avvitare il cilindretto come da foto.
 -Ave the stainless steel cord inserted into the metal support and have it screwed to lock it.
 -Ntroduire le cable d'ager et visser comme dans la photo.
 -As drahtseil einstecken und der zylinder so wie im bild gezeigt schrauben.
 -Oner el cable de acero y tornillar como explicado en foto.

Code: 7475
Collection: FACE
Version: 00 Date:
Brand: Decòrative / /

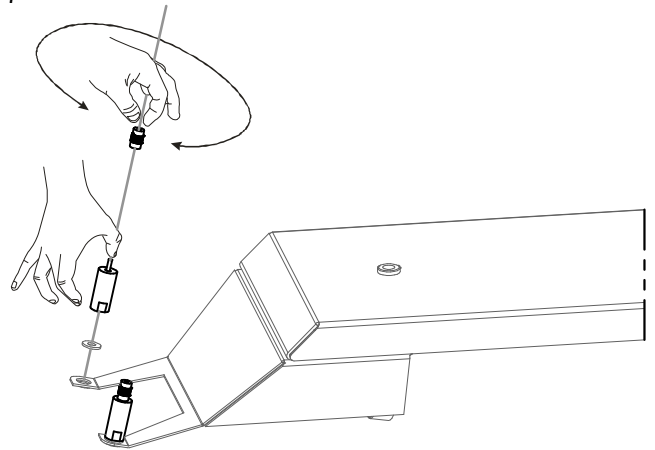
linea
light
group

Istruzioni per l'installazione
Installation instructions
Instrucciones para la instalaci3n
Instructions pour l'installation
Installationsanleitung

6

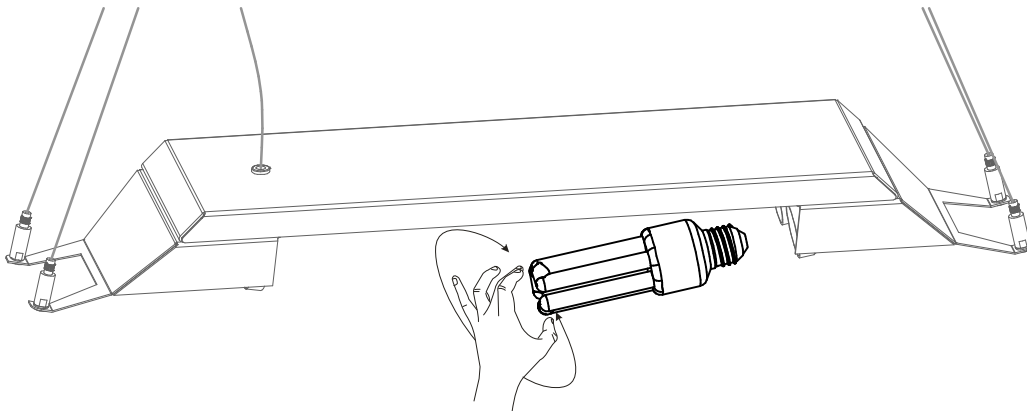


7



-Per regolare il cavo d'acciaio, svitare la bocchetta e premere sul perno
-To regulate the iron cable, unscrew the metal part pressing the button
-Pour regler le cable d'acier, devissier lebout et appuyer sur le pivot
-Laenge der haltseile einstellen huelse heraus drehen/eaenge einstellen und wieder befestigen
-Para regular el cable de acero, desatornillar el casquillo y apretar el perno

8



9

