

PRODUCT DATASHEET

HCI-TT 70 W/942 ND L PB

POWERBALL HCI-TT | Metal halide lamps with ceramic technology for enclosed luminaires

AREAS OF APPLICATION

- Streets
- Outdoor lighting
- Industrial installations
- Exhibition halls and trade fairs
- Approved only for use in enclosed luminaires
- Outdoor applications only in suitable luminaires

PRODUCT BENEFITS

- Very long lifetime
- High luminous efficacy
- Good color rendering
- Operation in existing HPS installations as ignition voltage of IEC 60662 is met
- Energy savings of up to 70 % when replacing mercury vapor lamps (HQL)
- Optimum energy efficiency on POWERTRONIC PTo 3DIM ECGs
- UV values significantly below the maximum permitted thresholds to IEC 61167 thanks to UV filter

PRODUCT FEATURES

- White light due to POWERBALL ceramic technology
- Light color: neutral white (NDL)
- Lamp survival factor: 95 % after 12,000 h burning time
- Dimmable on conventional control gears and electronic control gears



TECHNICAL DATA

Electrical data

Nominal wattage	70.00 W
Rated wattage	73.00 W
Lamp current	0.94 A
PFC capacitor at 50 Hz	12 μ F ¹⁾
Nominal voltage	100 V
Ignition voltage	1.8 / 5.0 kVp ²⁾

¹⁾ At rated voltage and $\cos \varphi \geq 0.9$

²⁾ Minimum / Maximum

Photometrical data

Rated lamp efficacy (standard condition)	103 lm/W
Rated luminous flux	7500 lm
Color rendering index Ra	90
Color temperature	4050 K
Light color	941
Rated LLMF at 2,000 h	0.88
Rated LLMF at 4,000 h	0.86
Rated LLMF at 6,000 h	0.84
Rated LLMF at 8,000 h	0.82
Rated LLMF at 12,000 h	0.80
Rated LLMF at 16,000 h	0.75
Rated LLMF at 20,000 h	0.70
UV protection	Yes

Dimensions & weight

Diameter	35.0 mm
Length	155.0 mm
Light center length (LCL)	102.0 mm
Product weight	50.00 g

Temperatures & operating conditions

Maximum permitted outer bulb temperature	350 °C
Maximum permitted base edge temperature	210 °C

Lifespan

Rated lamp survival factor at 2,000 h	0.99
Rated lamp survival factor at 4,000 h	0.98
Rated lamp survival factor at 6,000 h	0.97

Rated lamp survival factor at 8,000 h	0.96
Rated lamp survival factor at 12,000 h	0.80
Rated lamp survival factor at 16,000 h	0.50
Rated lamp survival factor at 20,000 h	0.20
Lifespan B50	18000 h
Lifespan B10	14000 h
Lifespan B5	12000 h
Operation mode LLMF/LSF	ECG

Additional product data

Base (standard designation)	E27
Product remark	ErP compliant according to EU Regulation 245/2009
Design / version	Clear
System guarantee level	3 (2/5)
Mercury content	7.8 mg ¹⁾

¹⁾ Maximum

Capabilities

Dimmable	Yes ¹⁾
Burning position	Any
Enclosed luminaire required	Yes

¹⁾ In combination with POWERTRONIC PTO

Certificates & standards

Energy efficiency class	A+
Energy consumption	81 kWh/1000h

Country-specific categorizations

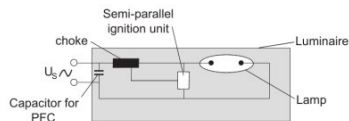
ILCOS	MT/UB-70/942-H/E/SL-E27-32/155
-------	--------------------------------

SYSTEM GUARANTEE

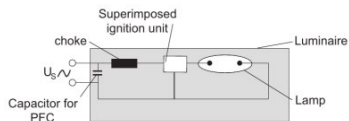
When operated with OSRAM POWERTRONIC control gear, an extended system guarantee is granted for these lamps

SAFETY ADVICE

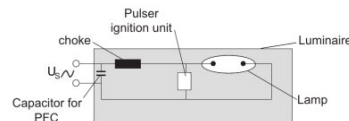
Where possible, use a timer igniter (switch-off time of at least 15 minutes). Otherwise, switch off the luminaire for at least 15 minutes if a brief interruption has occurred to the mains voltage supply.



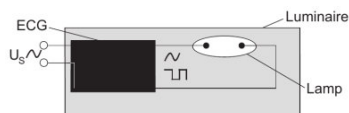
Circuit diagram



Circuit diagram



Circuit diagram



Circuit diagram

LOGISTICAL DATA

Product code	Product description	Packaging unit (Pieces/Unit)	Dimensions (length x width x height)	Volume	Gross weight
4052899378315	HCI-TT 70 W/942 NDL PB	Shipping carton box 12	168 mm x 130 mm x 212 mm	4.63 dm ³	870.00 g

The mentioned product code describes the smallest quantity unit which can be ordered. One shipping unit can contain one or more single products. When placing an order, for the quantity please enter single or multiples of a shipping unit.

REFERENCES / LINKS

For more information on the system guarantee and the terms and conditions of the guarantee visit

▶ www.ledvance.com/system-guarantee

DISCLAIMER

Subject to change without notice. Errors and omission excepted. Always make sure to use the most recent release.